



HOW TO
**Create the Basic Look &
Feel for a Store
Using the Wizard**

Revision 1.0



Miva Corporation
2629 Ariane Drive
San Diego, CA 92117

Telephone: 858-490-2570
Telefax: 858-490-0548

<http://www.miva.com>
info@miva.com

This document and the software described by this document are copyright 2000 by Miva Corporation. All rights reserved. Use of the software described herein may only be done in accordance with the License Agreement provided with the software. This document may not be reproduced in full or partial form except for the purpose of using the software described herein in accordance with the License Agreement provided with the software. Information in this document is subject to change without notice. Companies, names and data used in the examples herein are fictitious unless otherwise noted.

Miva is a registered trademark of Miva Corporation. Miva Order, Miva Merchant, Miva Mia, Miva Empresa, the Miva "blades" logo, and the Miva Engine are trademarks of Miva Corporation. Windows is the registered trademark of Microsoft Corporation. All other trademarks are the property of their respective owners. This document was developed and produced in San Diego, CA, USA.

MIVA CORPORATION WILL NOT BE LIABLE FOR (A) ANY BUG, ERROR, OMISSION, DEFECT, DEFICIENCY, OR NONCONFORMITY IN MERCHANT OR THIS DOCUMENTATION; (B) IMPLIED MERCHANTABILITY OF FITNESS FOR A PARTICULAR PURPOSE; (C) IMPLIED WARRANTY RELATING TO COURSE OF DEALING, OR USAGE OF TRADE OR ANY OTHER IMPLIED WARRANTY WHATSOEVER; (D) CLAIM OF INFRINGEMENT; (E) CLAIM IN TORT, WHETHER OR NOT ARISING IN WHOLE OR PART FROM MIVA CORPORATION'S FAULT, NEGLIGENCE, STRICT LIABILITY, OR PRODUCT LIABILITY, OR (F) CLAIM FOR ANY DIRECT, INDIRECT, INCIDENTAL, SPECIAL, OR CONSEQUENTIAL DAMAGES, OR LOSS OF DATA, REVENUE, LICENSEE'S GOODWILL, OR USE. IN NO CASE SHALL MIVA CORPORATION'S LIABILITY EXCEED THE PRICE THAT LICENSEE PAID FOR MERCHANT.

PN - MM1056-01 (ver. 3.00)

HOW TO Create the Basic Look & Feel for a Store Using the Wizard

Look & Feel Configuration Wizard

Allows you to further customize the look and feel of your store. The wizard main screen is shown on the next page.



Select the basic look of your store site. If you want to keep the setting you selected in the Create Store wizard, click Current Settings, otherwise select one of the four looks. To get a closer look at each scheme, click on its picture.

Build Introductory Message

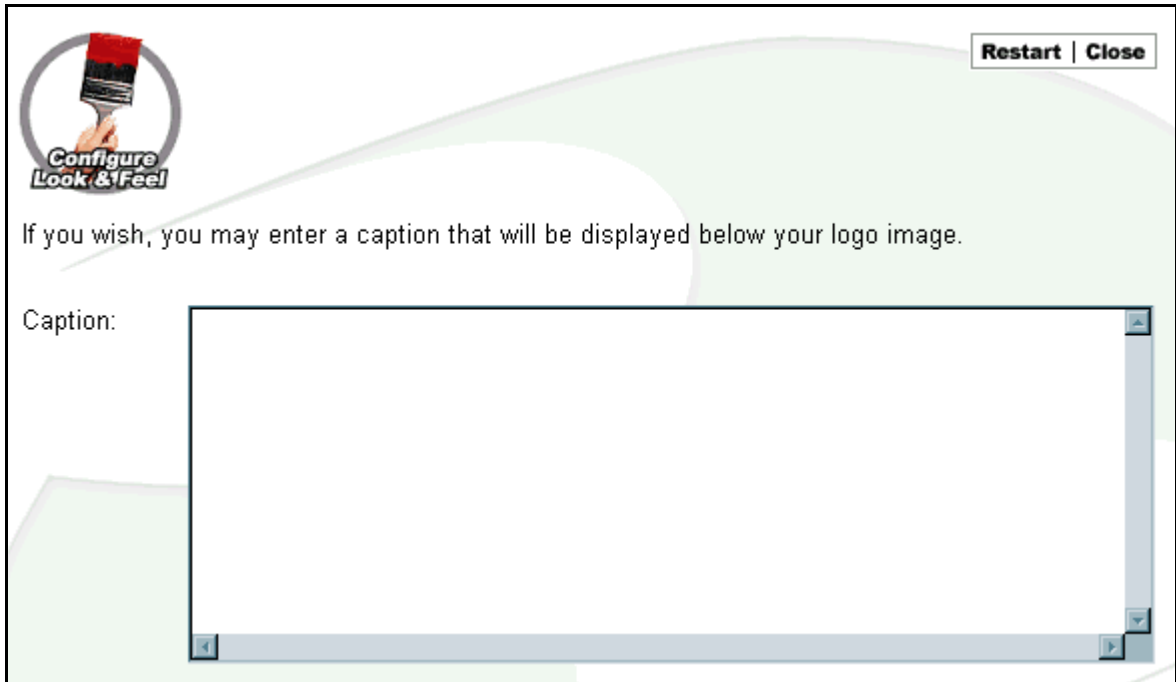
When you click on your store scheme selection, the next screen displays:



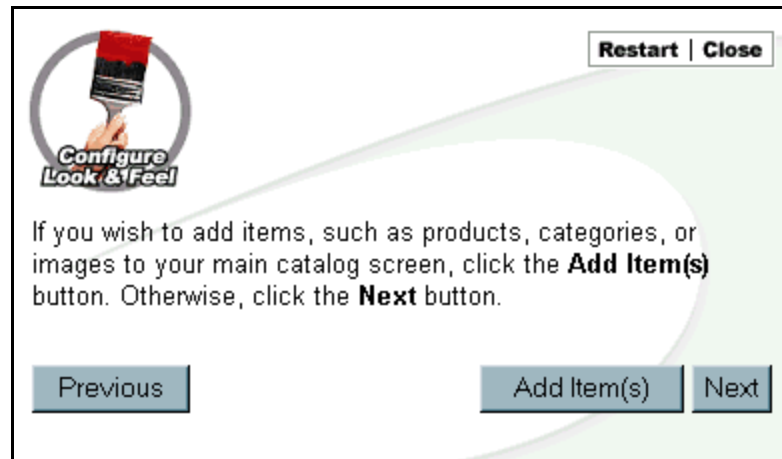
This screen allows you to build an introductory message for the store. Click on Build Introductory Message.



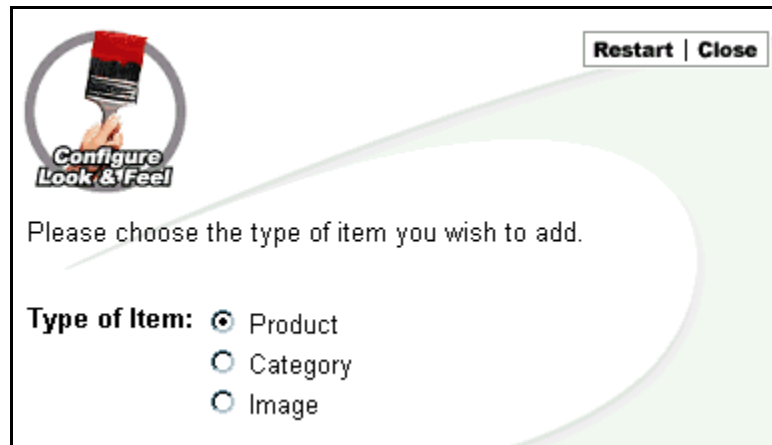
1. Enter the path to your logo image if you are going to use one or click on the upload button to find the location.



2. Enter the caption for the logo image.



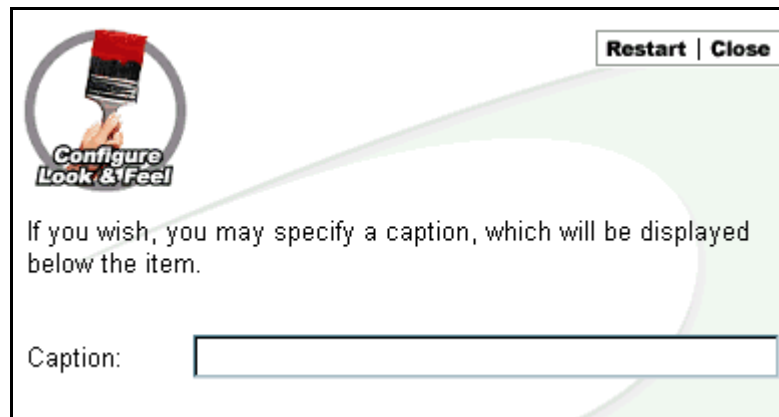
3. To add items, click on the Add Item(s) button.



The screenshot shows a window titled "Configure Look & Feel" with a "Restart | Close" button in the top right corner. On the left, there is a circular logo featuring a hand holding a paintbrush. The main text reads "Please choose the type of item you wish to add." Below this, under the heading "Type of Item:", there are three radio button options: "Product" (which is selected), "Category", and "Image".

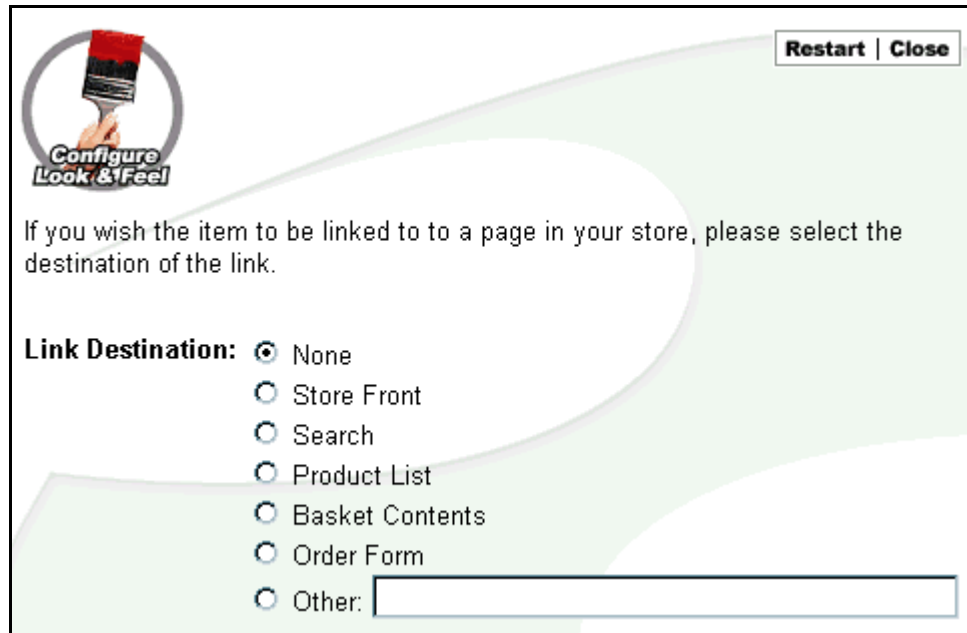
4. Select the type of item you wish to add to your screen. You have a choice of Product, Category, or Image.

Note: Any products or categories that you would like to include must be added to your store. Use the Add Product Wizard and/or the Add Category Wizard to add these to the store.



The screenshot shows the same "Configure Look & Feel" window. The text now reads "If you wish, you may specify a caption, which will be displayed below the item." Below this text is a label "Caption:" followed by an empty text input field. The "Restart | Close" button remains in the top right corner.

5. Enter the text as caption you wish to have below the image.



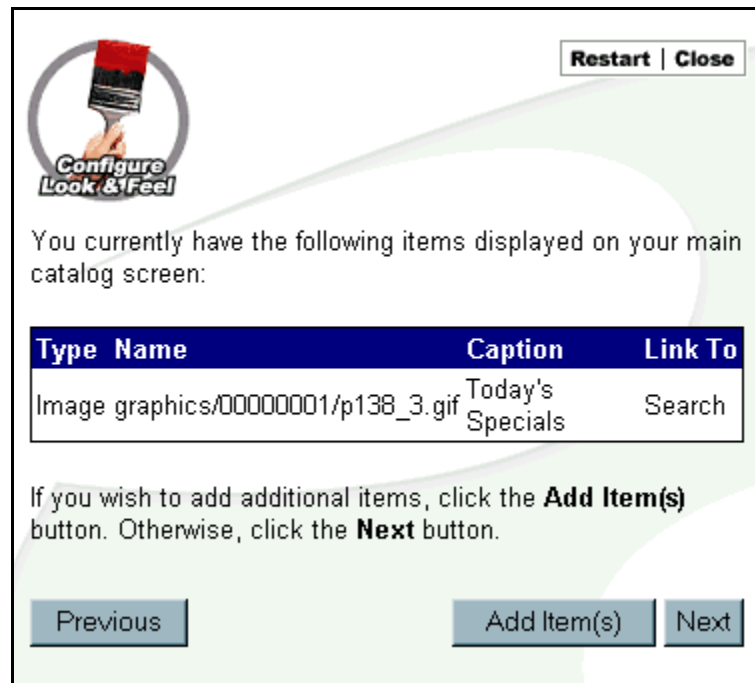
Configure Look & Feel Restart | Close

If you wish the item to be linked to a page in your store, please select the destination of the link.

Link Destination:

- None
- Store Front
- Search
- Product List
- Basket Contents
- Order Form
- Other:

6. Enter the page in your store where you want to link the item.



Configure Look & Feel Restart | Close

You currently have the following items displayed on your main catalog screen:

Type Name	Caption	Link To
Image graphics/00000001/p138_3.gif	Today's Specials	Search

If you wish to add additional items, click the **Add Item(s)** button. Otherwise, click the **Next** button.

Previous Add Item(s) Next

- 7. This screen shows which item(s) are currently displayed on the first page.
- 8. To add other items, click on Add Item(s) and go through the procedure to add as many items as you wish.